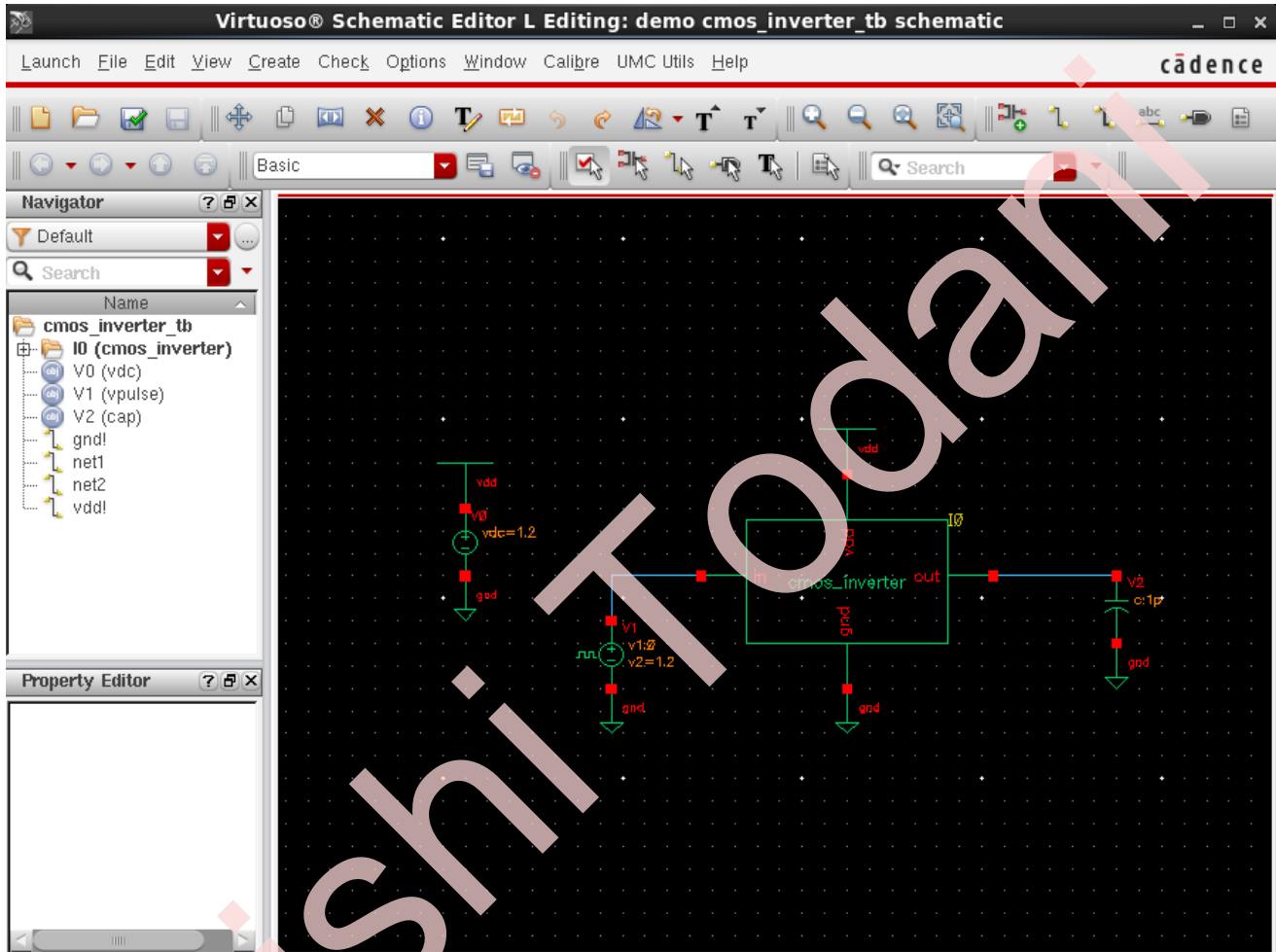


SMDP C2SD VLSI LAB – NIT DURGAPUR

Post Layout Simulation

Before performing post layout simulation, calibre view of symbol layout and test bench for simulating the symbol should be ready.

To generate calibre view, refer to Tutorial on “Layout Verification”



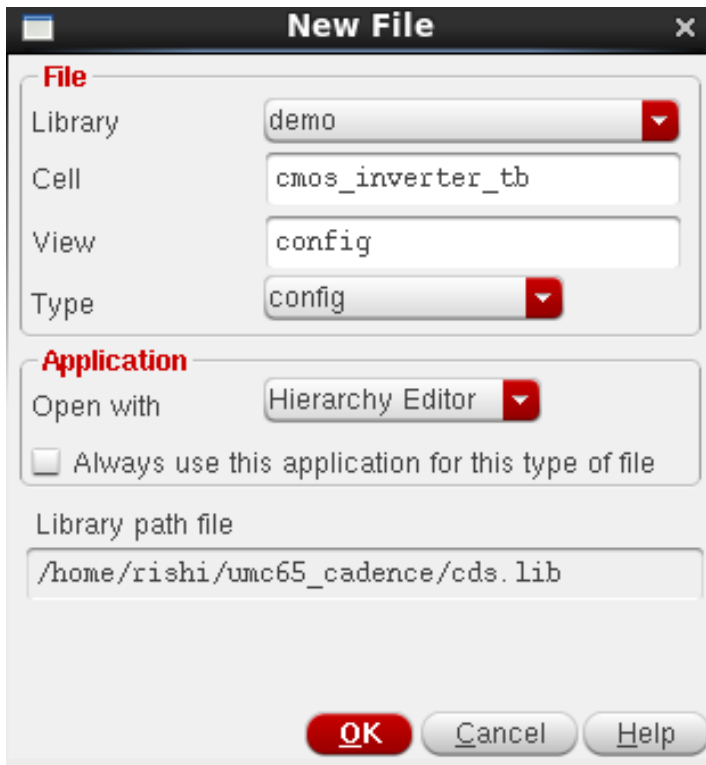
Create schematic for simulating symbol. Here we are simulating a CMOS inverter.

A schematic view of cellname “cmos_inverter_tb” is created where cmos_inverter symbol is instantiated whose calibre view exists.

In Library Manager we now create a “config” view of the test bench cellview.

Choose the test bench cell in library manager and choose File > New > Cell view

SMDP C2SD VLSI LAB – NIT DURGAPUR

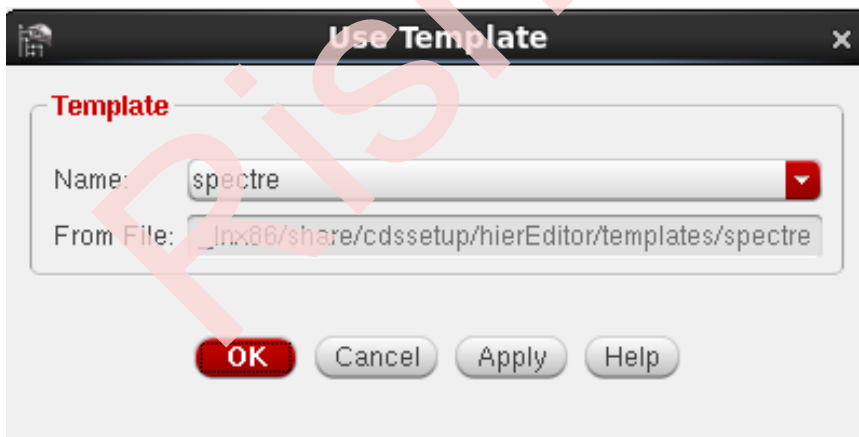


The cellname should be the name of the test bench cellview and type should be set to “config” from the drop down menu. Application Open with will be Hierarchy Editor.

Click Ok

A New Configuration window will open up.

Click on Use Template button at the bottom and choose “spectre” from the drop down button under Name in the Use Template window that opens up.

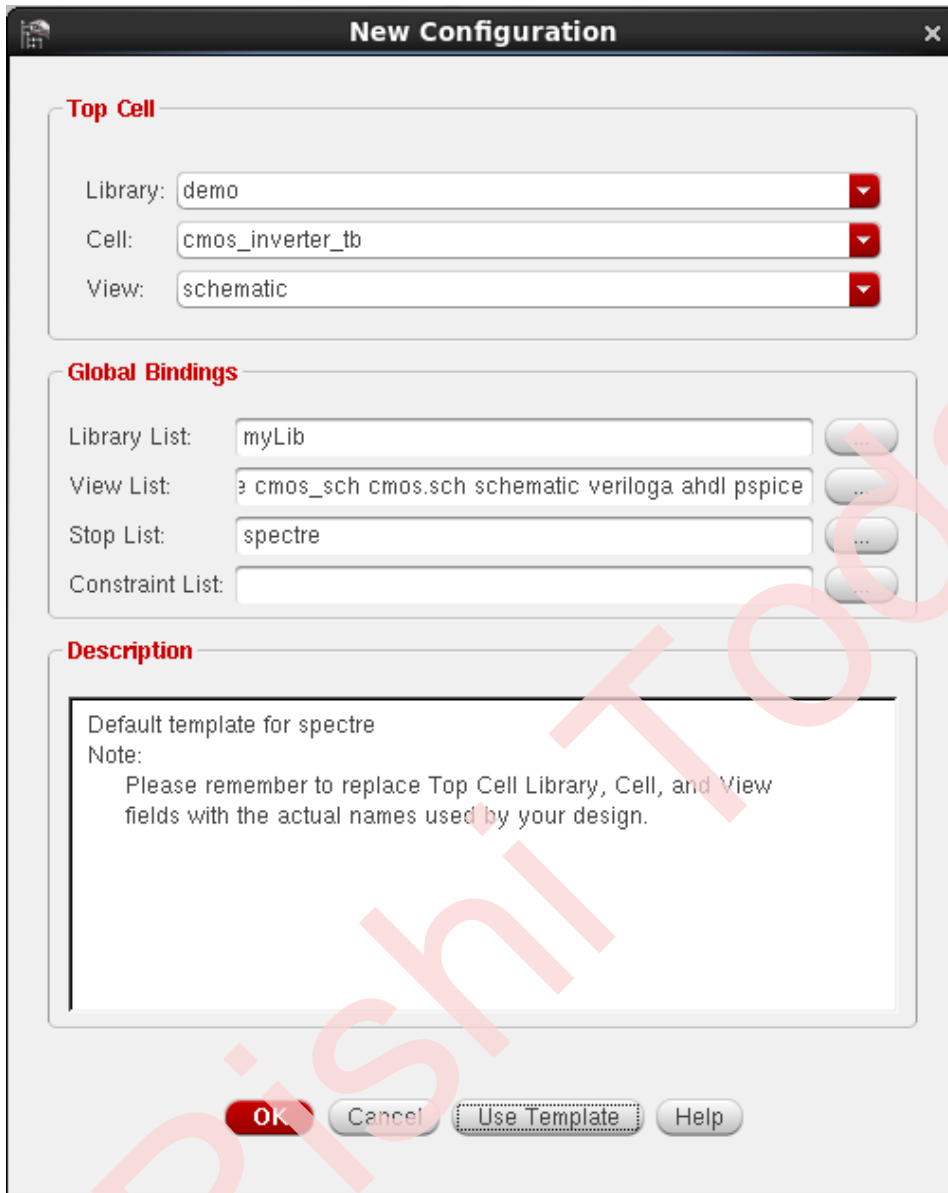


Click OK

SMDP C2SD VLSI LAB – NIT DURGAPUR

Under Top cell options, Choose your library and cell name of the test bench. View should be set to schematic. It is the test bench which already exists.

New Configuration widow should look like this when setup is complete



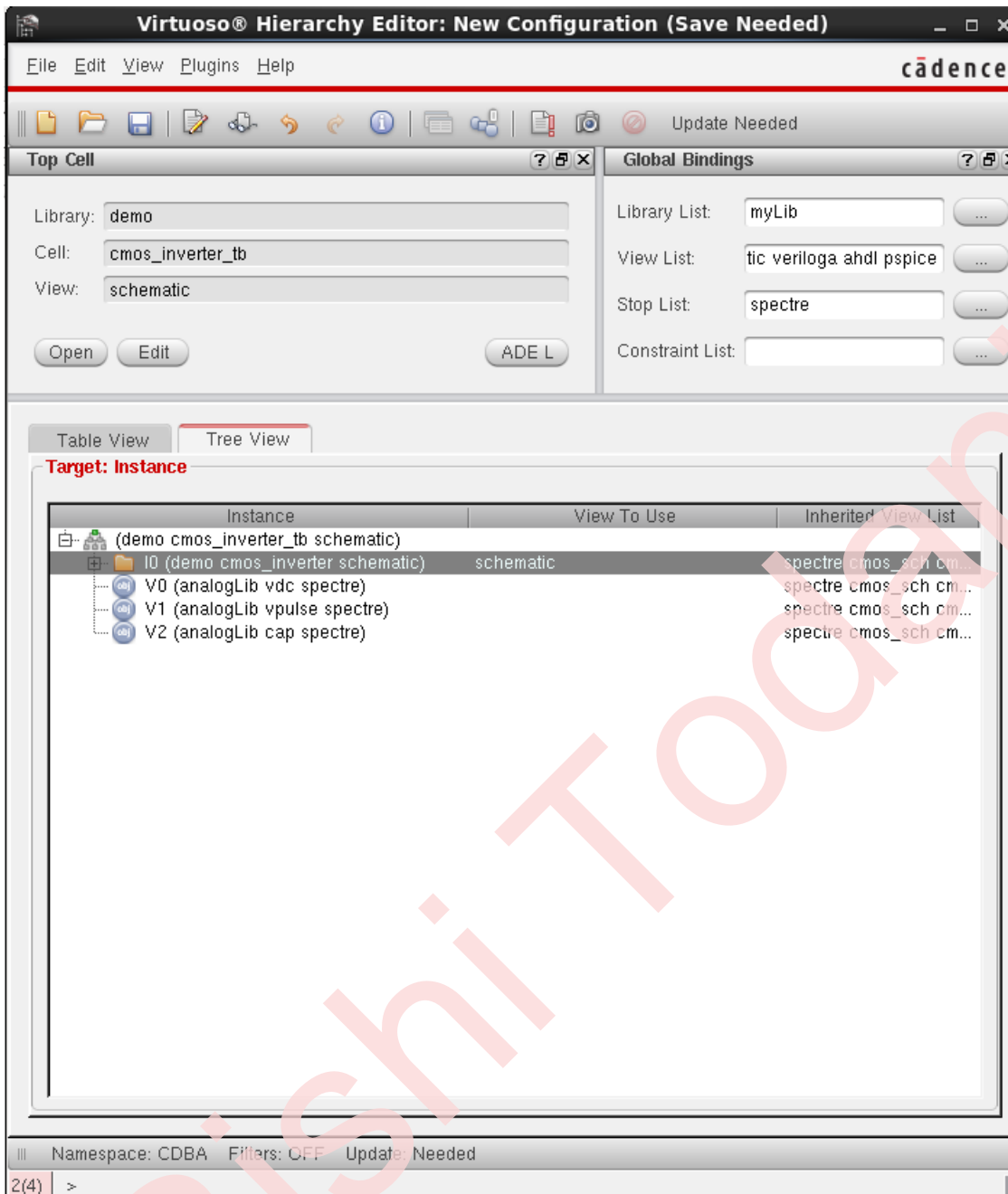
In the Hierarchy editor window, Click on Tab Tree View

It will list the items in the test bench out of which one will be the symbol whose schematic view as well as calibre view exists. There may be other voltage sources shown in the tree view.

Right click on the design name and choose > Set Instance View > Schematic

Under the View to use column, schematic will appear for the symbol under test. Click Save

SMDP C2SD VLSI LAB – NIT DURGAPUR



We can click the open button under top cell section. This will open the test bench schematic. We can simulate as usual by opening ADE. This will give us pre layout results since right now schematic view is attached.

To perform post layout simulation, in tree view, right click on your cell name > Set Instance View > Calibre should be selected. The View to Use column should now show Calibre instead of schematic. Click Save.

Now post layout simulation will be carried out. The difference can be easily noticed in the spectre log which lists the number of capacitors and resistors. During post layout simulation, number of capacitors and resistors would be quite large.